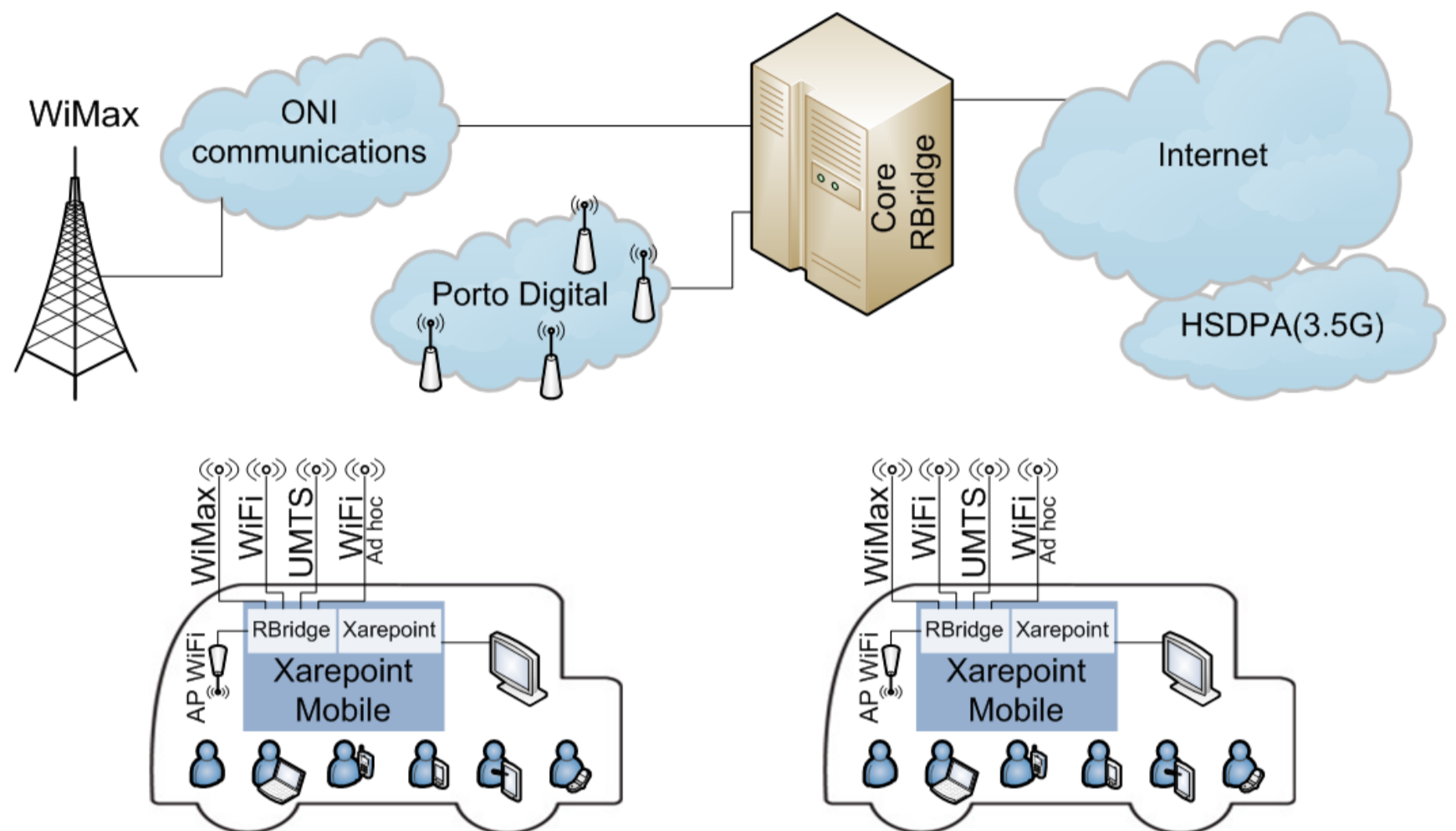


SITMe – Integrated services to metropolitan transport networks

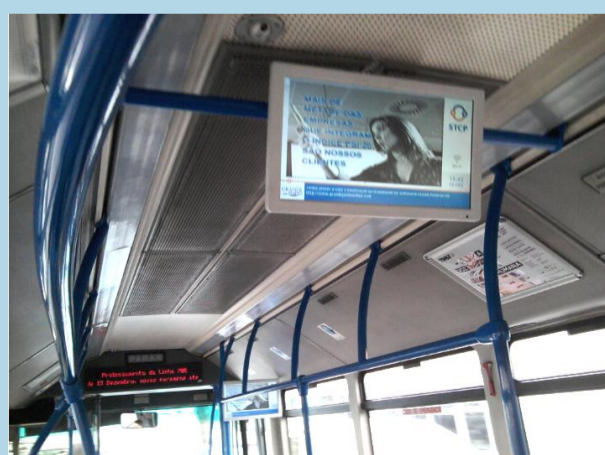
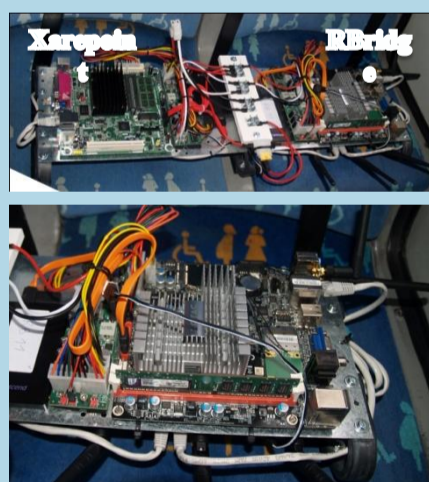
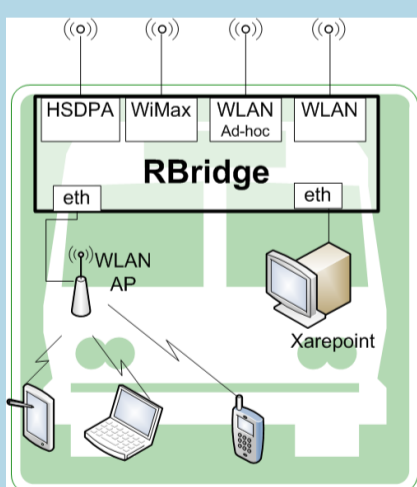
Reference Scenario



Objectives

- Provide information services to bus passengers
 - Internet access
 - News and entertainment
 - Intermodal traveling support information
 - Interactive services (games, localization)
- Implement a pilot with 11 buses during 6 months
 - Line 207 of STCP
 - Starting 22th December, 2011

Results



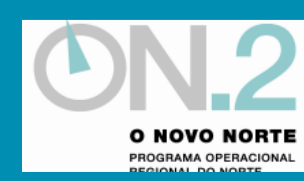
Main Contributions

- Economical study on service commercial viability
- Communication system architecture
 - Heterogeneous networks intelligent network interface selection
 - Calculate the cost for each link reaching a specific destination
 - Private network links are preferred over public operator links
 - Seamless technology switching
 - Terminals are not aware of which access technology is being used
- All terminals think they're in the same LAN
 - L2 overlay network
 - Easy to deploy new services
- Seamless terminal mobility between RBridges
- Mesh Topology network

Conclusions

- Real gains in using heterogeneous technologies in a metropolitan environment
- Passengers intensively use Internet access onboard buses
- On board TV publicity is attractive to local business

PARTNERS:



UNIÃO EUROPEIA
Fundo Europeu de Desenvolvimento Regional